

MARKET LINK

for primary producers

A publication of the Market Information Service (MIS) - Ministry of Agriculture and Fisheries
“Linking the market and primary producers”

Cucumber

Cucumber is a widely-cultivated vine plant in the Cucurbitaceae family that bears usually cylindrical fruits, which are used as vegetables. It is considered as an annual plant and there are three main common varieties of cucumber, slicing, pickling and burpless/seedless.

Cucumber originates from South Asia, but now grows on most countries including the Pacific Island Countries.

The global production peaked at 80 million tonnes in 2021; and China is the largest cucumber producer in the world with more than 70% of the total global annual production.

In Samoa the production of cucumber remains steady from the previous years, these are mainly grown domestically either for home consumption or mainly for sale in local markets.

There are four varieties of cucumber that is commonly grown in Samoa, the Money Maker, Zipangu, Bountiful and the Slice Master

Cucumber can be planted all year round however it grows best in the cooler season (April-November). They benefit from the nitrogen left in the soil after legumes have grown and rotated out to another spots. Cucumber grows to its full harvestable size within two and half months.

Cucumber Market situation

The Cucumber is one of the most consumed vegetables in Samoa, and most families and institutions cultivate this agricultural commodity in Samoa. The Chinese cabbage is a fast growing and high yielding produces high. The common type that is grown in Samoa is known as the money maker.

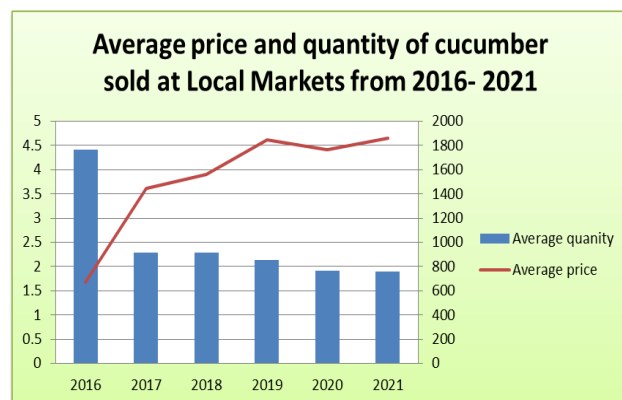


The supply of Cucumber as shown in Figure 1 shows a gradual declined of its supply to local markets from 2019 to 2021 by 17%. With the supply continues to drop, prices for Cucumber continues to soar over the years given its limited production sold at local market. The most significant contributing factors to the declining are the limited number of importations shipments from overseas due to covid restrictions that scarce the supply of seeds,

Inside this issue	
SPECIAL FEATURES	PAGE
Cucumber	1
Cucumber (market situation)	1
Cucumber enterprise	2
Cabbage value chain map	5
OUR REGULAR FEATURES	
Prices of Ag commodities at Fugalei Market	6
Foreign Exchange Rate	6

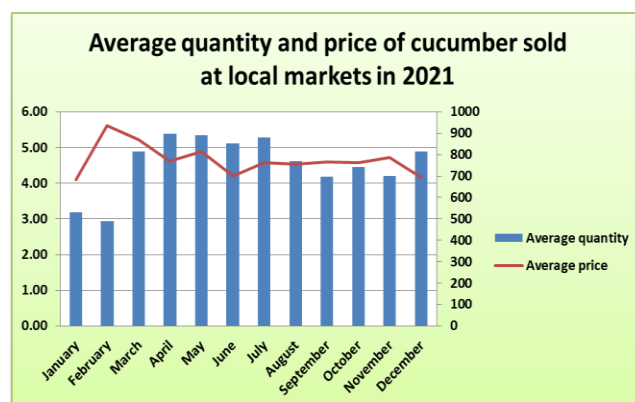
fertilizers and pesticides at local suppliers and of course, the ongoing impacts of climate change nowadays.

Figure 1



SOURCE: SBS Local Market Survey

Figure 2



SOURCE: SBS Local Market Survey

The wet season affected the number of Cucumber produced and sold at Fugalei market which causes a major dropped to Cucumber production at the beginning of the year as shown in Figure 2, and significantly rose by an in volume (816 kg) in March whilst the price varies staggantly from April to June.

Diseases

Cucumbers are susceptible to fungal growth if the leaves get wet frequently, that is why it is strongly recommended the use of drip irrigation to keep the leaves dry, or water cucumbers in the

morning so they can quickly dry off in the sun. The use of tunnel houses technology is also another good way to grow cucumbers and avoid being wet frequently during wet seasons.

Chinese cabbage enterprise

Planting Time:

All year around however, the best yields are obtained in the dry season (April – November), due to cooler temperatures resulting in reduced insect damage.

Planting Methods:

Seeds are sown directly into well cultivated soil.

Spacing:

Between rows: 0.6m x 0.8 Plants within rows: 0.5m x 0.6m

Fertilizer:

a) Poultry Manure: 2 tons/acre Broadcast and mix well with soil 2 weeks before planting.

b) NPK: - 13:13:21 80kg/acre basal application before sowing. - Soil analysis should be done before fertilizer application

Weed Control/ Management:

Hand weeding or hoeing is necessary. Weeds are removed when plants are still standing.

Disease Control/Management:

Anthrachnose: Use healthy seeds of resistant varieties. Spray Manzate at 21g/16L of water. Gummy Stem Blight, Mosaic Powdery Mildew: Apply Benomyl @ 11g/16L of Water. - Use Kocide at 32g/15L of Water to prevent fungal infections. - Avoid planting at high density.

Harvest Yield/Food Value:

Approximately, 8 cucumbers are harvested per plant, with 5 cucumbers per packet. A total of 912 packets are sold.

Yield:

12,000-15,000kg/acre

Food Value:

Vitamin K and Vitamin A.

Medicinal Properties of Cabbage

Vegetables are healthy dietary choice because they provide vitamins and minerals which maintain proper body functioning, proteins which build and repair body tissue, and carbohydrates and fats which energize the body. Vegetables can be eaten in plentiful amounts and are excellent sources of vitamins and minerals necessary for healthy body.

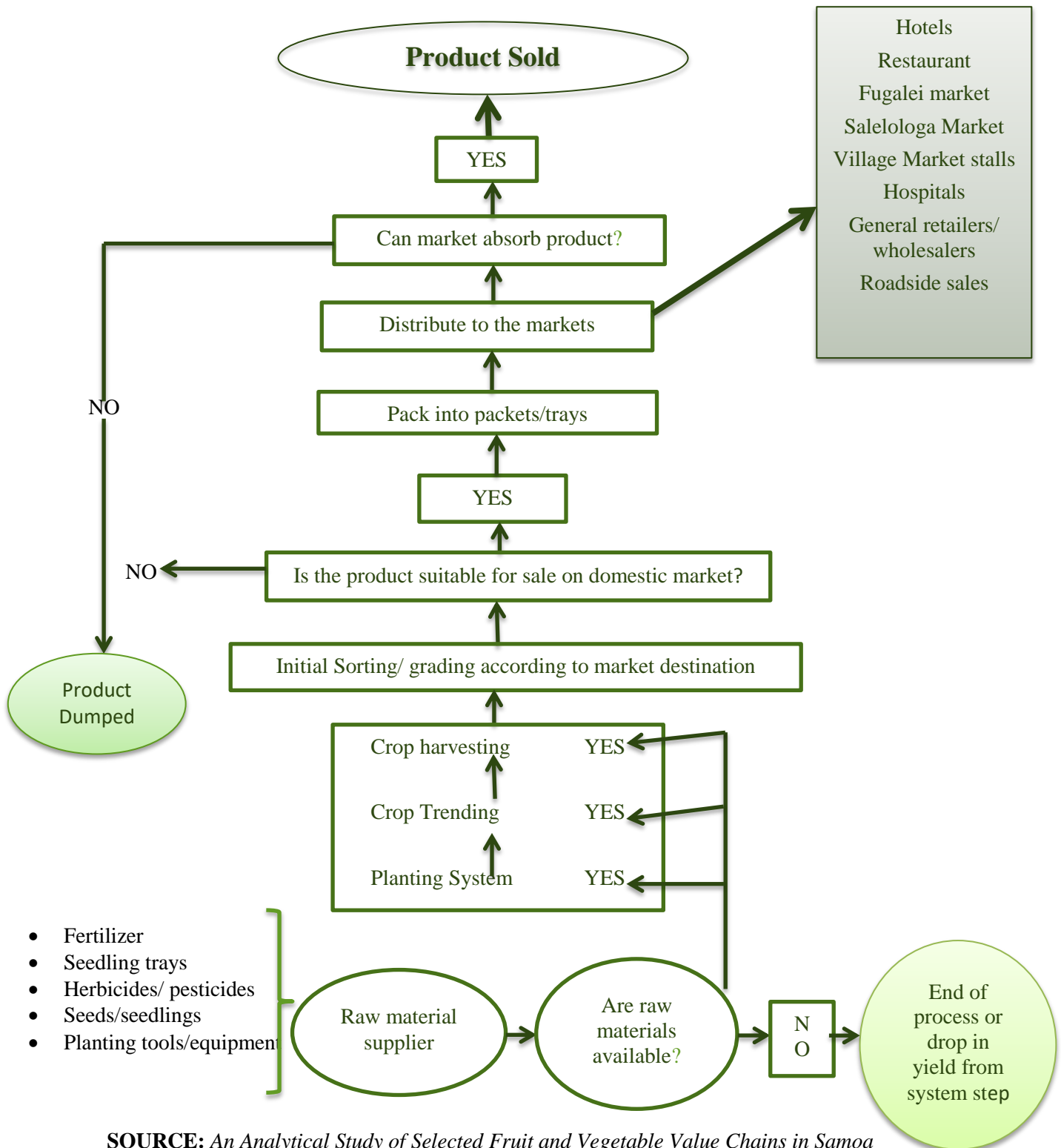
Cucumber is an excellent source Vitamin K and C of more than 70% its nutrients, although cucumber also contains a high volume of water, in fact it is made up of 96% of water. And because its high concentration of water, cucumbers are very effective at promoting hydration and can help you meet your daily fluid needs.

Cabbage has been used for food and medicine remedy for a long time.

Final Analysis

There are currently no opportunities for the Local cabbage to be exported to overseas as there is no demand of the produce from overseas countries. It is only considered to be locally consumed and is traded among farmers and commercial institution.

Cucumber Value Chain Map



SOURCE: *An Analytical Study of Selected Fruit and Vegetable Value Chains in Samoa*

Table 1: Average price of Agricultural Commodities at Local Markets.

Commodities (SAT\$/kg)	May 2021	June 2021	Lowest price for 2021 to date	Highest price for 2021 to date
Taro	1.67	1.93	1.63	1.93
Banana	1.04	1.00	0.92	1.04
Taamu	4.92	3.73	3.35	5.17
Coconut	0.95	0.95	0.94	1.01
Breadfruit	1.09	1.40	1.00	1.47
Yam	3.28	3.52	3.28	4.51
Head cabbage	8.30	7.75	7.75	11.89
Tomato	14.41	13.86	13.42	17.26
Chinese cabbage	5.66	5.82	5.66	7.27
Cucumber	4.88	4.20	4.11	5.61
Pumpkin	3.65	3.55	2.91	4.45

Source: Samoa Bureau of Statistics

Table 2: Foreign currency per tala (ST\$)

May-June 2021	USD\$	NZD\$	AUD\$	YEN\$	FJD\$	EURO
1 Samoan Tala SAT\$ =	0.3888	0.5303	0.4998	41.9900	0.7826	0.3111

Source: Bank of the South Pacific

Market Link Newsletter

This newsletter is published bi-monthly and it seeks to assist stakeholders (farmers, consumers, wholesalers, policymakers) make informed market and marketing decisions based on credible, relevant price and supply information. Help us help you by providing constructive feedback on market information issues that will improve the service which will lead to growing a healthy and wealthy Samoa. For more information contact the Policy Planning and Communication Division and ask for Soo Iuvale.

Disclaimer

While every effort has been made to ensure the information in this publication is accurate, the Ministry of Agriculture and Fisheries does not accept any responsibility or liability for error or fact omission, interpretation or opinion which may be present, nor for the consequences of any decisions based on this information. Any views or opinions expressed do not necessarily represent the official view of the Ministry of Agriculture and Fisheries.

You can contact us by phone, fax and email or come down and visit us. We are located on Level 1, TATTE Building, Sogi or you can write to us at:

Ministry of Agriculture and Fisheries

P.O Box 1874

Phone: (685) 22 561

Fax: (685) 28 097 Email: junior.iuvale@maf.gov.ws

